

!!! Best viewed in your browser



In this monthly newsletter we proudly present the PhD ceremonies of our APH researchers.

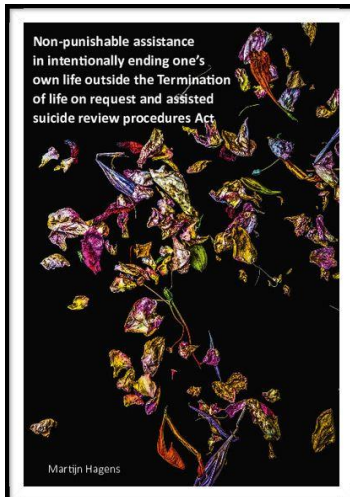
Enjoy!

Did you know...

that APH has recently made an adaptation regarding one of the mandatory research institute specific **educational requirements** of the 30 ECTS Training Plan for APH PhD candidates? This adaptation concerns a reduction of a minimum of 6 ECTS to 4 ECTS for courses focused on 'advanced (methodological) research skills'.

For more information, visit the [APH website](#).

APH PHD CEREMONIES MAY 2022



Non-punishable assistance in intentionally ending one's own life outside the Termination of life on request and assisted suicide review procedures Act

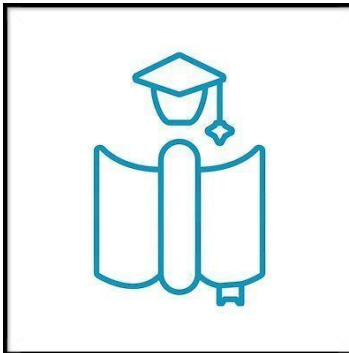
Martijn Hagens

Research program: Aging & Later Life

19 May 2022, 11:45

Where: VU, Aula [Livestream](#)

[Read thesis](#)



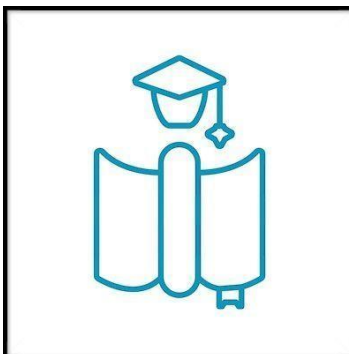
Genetics and epigenetics of early life development

Veronika Odintsova

Research program: Methodology and Personalized Medicine

23 May 2022, 11:45

Where: VU, Aula [Livestream](#)



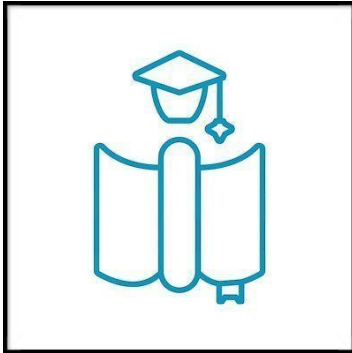
Mental health and dropout of nursing students

Ellen Bakker

Research program: Quality of Care and Societal Participation & Health

24 May 2022, 13:45

Where: VU, Aula [Livestream](#)



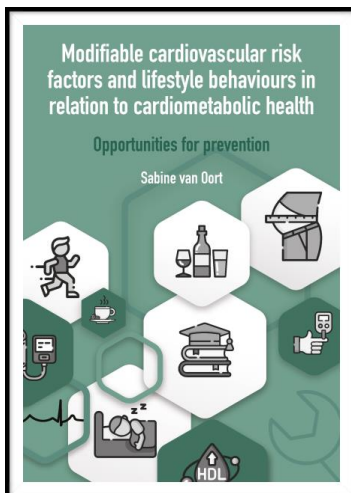
Clinical, methodological, and dynamic perspectives on recovery of acutely ill older adults

Daisy Kolk

Research program: Aging & Later Life

24 May 2022, 15:00

Where: UvA, Agnietenkapel [Livestream](#)



Modifiable cardiovascular risk factors and lifestyle behaviours in relation to cardiometabolic health

Sabine van Oort

Research program: Health Behaviors & Chronic Diseases and Methodology

25 May 2022, 13:45

Where: VU, Aula [Livestream](#)

Visit the APH website for updates on:

[News](#) | [Events](#) | [Awarded grants](#)



Copyright © 2022 APH, All rights reserved.

Our mailing address is: aph@amsterdamumc.nl

Want to change how you receive these emails?

You can [update your preferences](#) or [unsubscribe from this list](#)